



Join the FUN the Entire Summer at
Reeves Community Center
June 8, 2009 through August 21, 2009
2 **GREAT** Camps to Choose From

You are required to pay for 9 weeks regardless of participation!

Day Camp On Site At RCC

Ages: 5-12 years of age
Time: 6:30AM-6:00PM
Cost: \$60 per week/per child for City Residents
\$75 per week/per child for Non-Residents
\$5 discount per each additional child
(Participant package holders receive 20% off weekly fees)

Park Program

Drop-Off and Pick-Up at Jones School

Ages: 5-12 years of age
Time: 6:30AM-6:00PM
Cost: \$60 per week/per child for City Residents
\$75 per week/per child for Non-Residents
\$5 discount per each additional child
(Participant package holders receive 20% off weekly fees)

Activities:

- Swimming • Basketball Skills • Arts & Crafts • Fitness Camp • Instructional Games • Kickball • Wiffleball • Soccer • Disc Golf • Line Dancing • Girls' Glamour • Game Days and Bowling.

Weekly Field trips will include: Roller Skating, Public Library, Parks and Movies.

(Some activities may require a small fee not included in the weekly tuition.)

Lunches provided by RCC
All Staff Counselors are CPR/First Aid Certified.

Counselor to Camper Ratio 1:15

1/2 Day Camp Program (at RCC)

Monday, Wednesday, Friday
7:30AM-11:30AM

Resident: \$45
Non-Resident \$54

Tuesday & Thursday
7:30AM-11:30AM

Resident: \$30
Non-Resident \$45

Lunch Not Provided,

**** Must Bring A Snack ****

Must commit to 9 weeks out of the summer.

2 Week Camp

Pick any two weeks during the Summer!!!

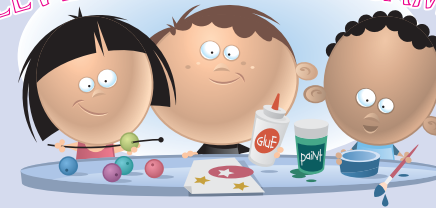
PARK PROGRAM

Resident: \$45
Non-Resident \$54

DAY CAMP

Resident: \$45
Non-Resident \$54

REEVES KIDS SPRING CAMP



Hurry...Last day to sign up April 1st

Dates: April 6,7,8,9,13

Time: 6:30am - 6:00pm

Fees: City Residents: \$12 per day

Non-Residents: \$15 per day

Ages: 5-12

Location: Kid's Klub Room

Activities: • Fun at the Park • Fit-N-Fun Zone • Game Day • Computer Lab • Girls Glamour • Fun with Crafts • Organized Games
Please bring snacks and lunch each day.

If you register your child, you will be charged regardless of participation!

FOR MORE INFORMATION CALL 786-8313